



# High School and Post-School Pathway Transition

# Overview



TRANSITIONING TO  
HIGH SCHOOL



POST-SCHOOL  
PATHWAYS

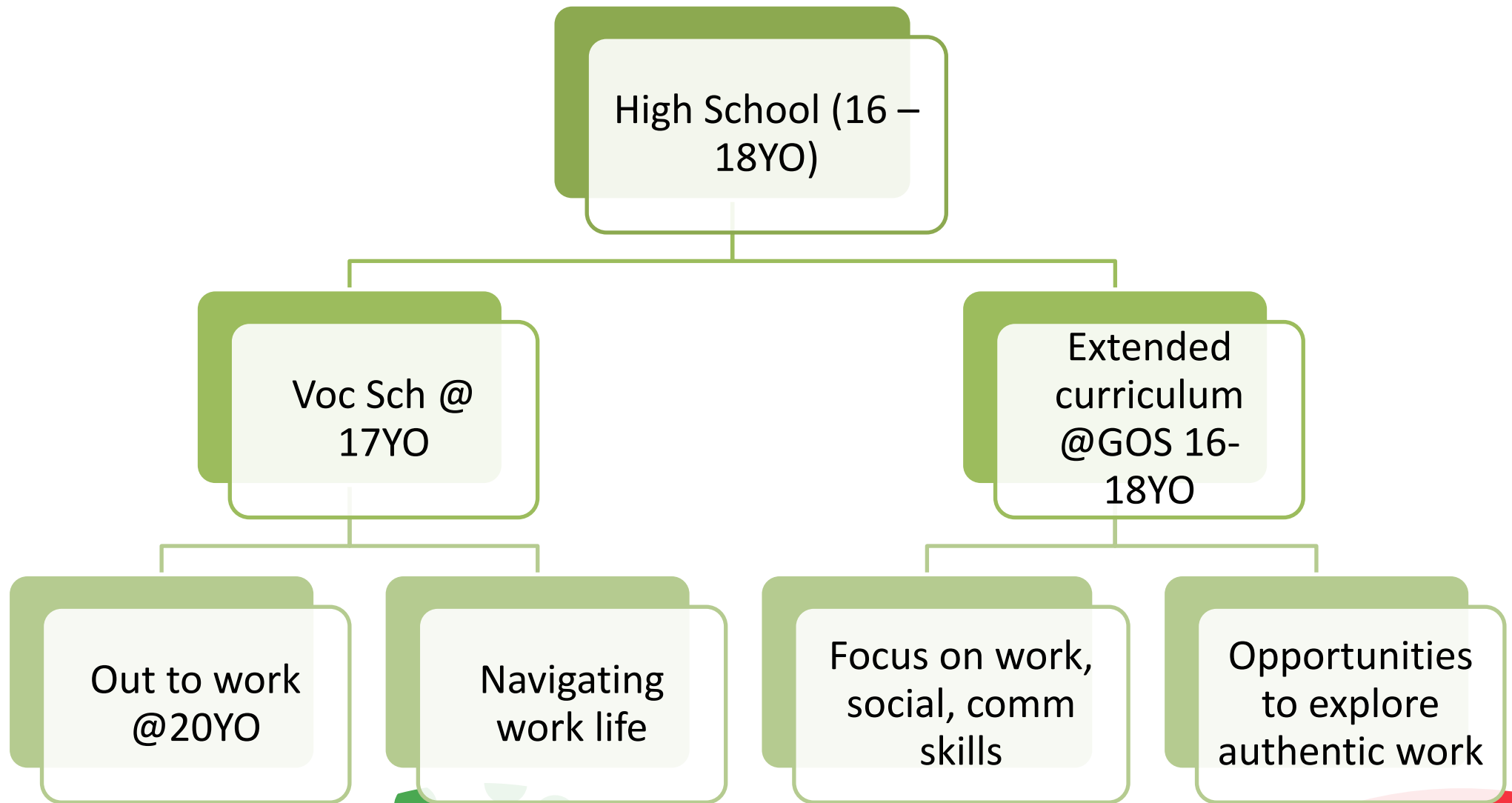
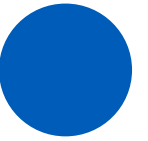


CARE PLAN



PREPARATION

# From Secondary into High School



# Extended Curriculum Considerations

Age	16	17	18	19	20	21	22
Previous years	Apply for Vocational Sch	3-year programme at Vocational Sch			Post-SPED		
Current	Extended curriculum opportunities		3-year programme at Vocational Sch			Post-SPED	
	Extended curriculum opportunities			3-year programme at Vocational Sch		Post-SPED	



**GOS has extended curriculum opportunities for students**





# Extended Curriculum

How it is carried out & what is taught:

## **A) Community-based instruction (CBI)**

- Lessons are conducted in community spaces where learning can be applied
- Project Work (where literacy, numeracy and daily living skills are integrated)

## **B) Modular and Integrated**

- Effective communication skills (for life and work, presentation, confidence-building)
- Social skills (relationship management, social awareness)
- Self-determined learning (goal setting, planning strategies, evaluating progress)

## **C) Work Experiences**

- In school
- Out-of-school (e.g. hospitality, retail, F&B)

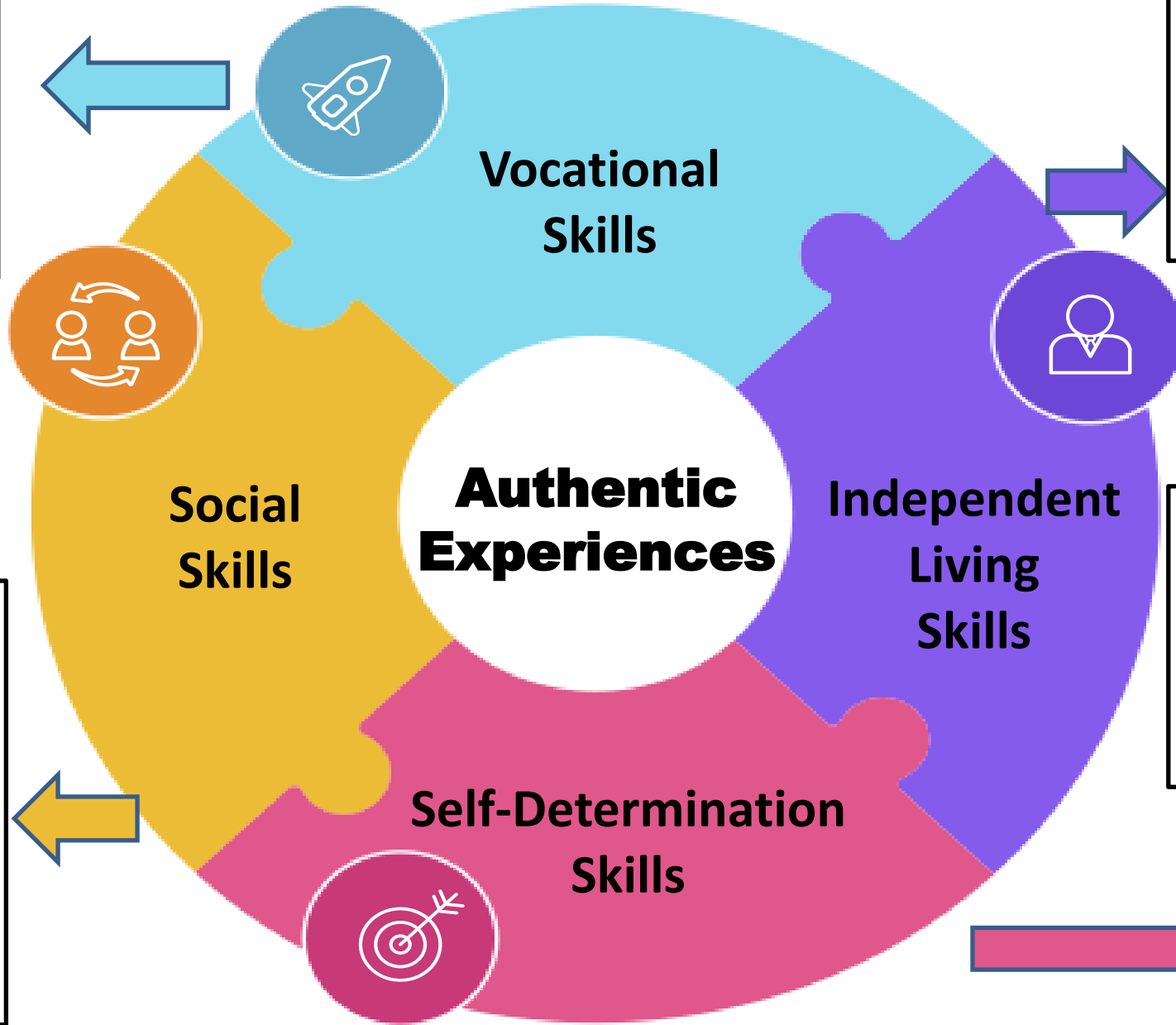
# Integrated Learning

**Vocational Skills**

- Partners in hospitality, horticulture etc
- Explore new avenues, integrating soft skills

**Community-Based Learning**

- At the market, community centre, polyclinic
- Apply independent living skills like travelling, navigating real world situations
- Budgeting, tracking expenditure

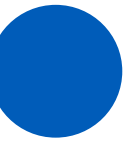


**Effective Communication**

- Learn & apply in authentic setting
- Skills like initiating conversation, asking questions, presentation skills

**Building self-determination**

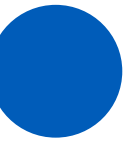
- Setting SMART goals
- In areas of finance, health, academic, leisure, skills



# Community Living Skills

- The community space is the classroom
- Interdisciplinary approach – academic learning in English, Math, ICT, PE and daily living skills

# Community Partners

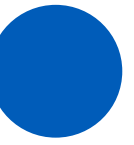


## Places where our students learn

- Hey Sprouts
- Cordypharma
- ComCrop Pte Ltd
- Providence Care Centre
- West Coast Community Centre
- Jurong Point
- Anglo Chinese School (I)
- Jurong Green Community Centre







# What we want to **ACHIEVE?**

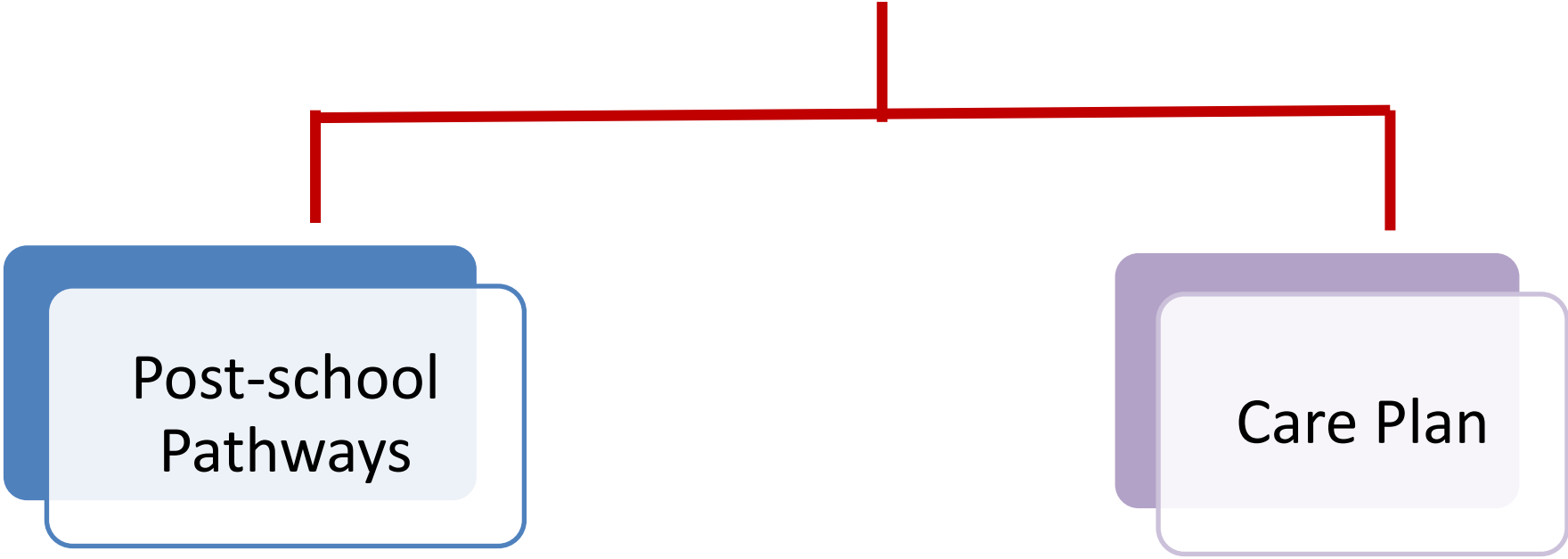
1. **EQUIP** graduates with **skills** and **tools** needed to succeed at home, in the workplace and as part of Singapore's community.
2. **EXPAND learning experiences** and expose them to possibilities for their future.
3. **EMPOWER** graduates to make more **informed decisions** regarding their educational and career choices.





# Post-school Plan





# Envisioning and planning – Consideration

Living  
arrangements

Health

Transport

Finances

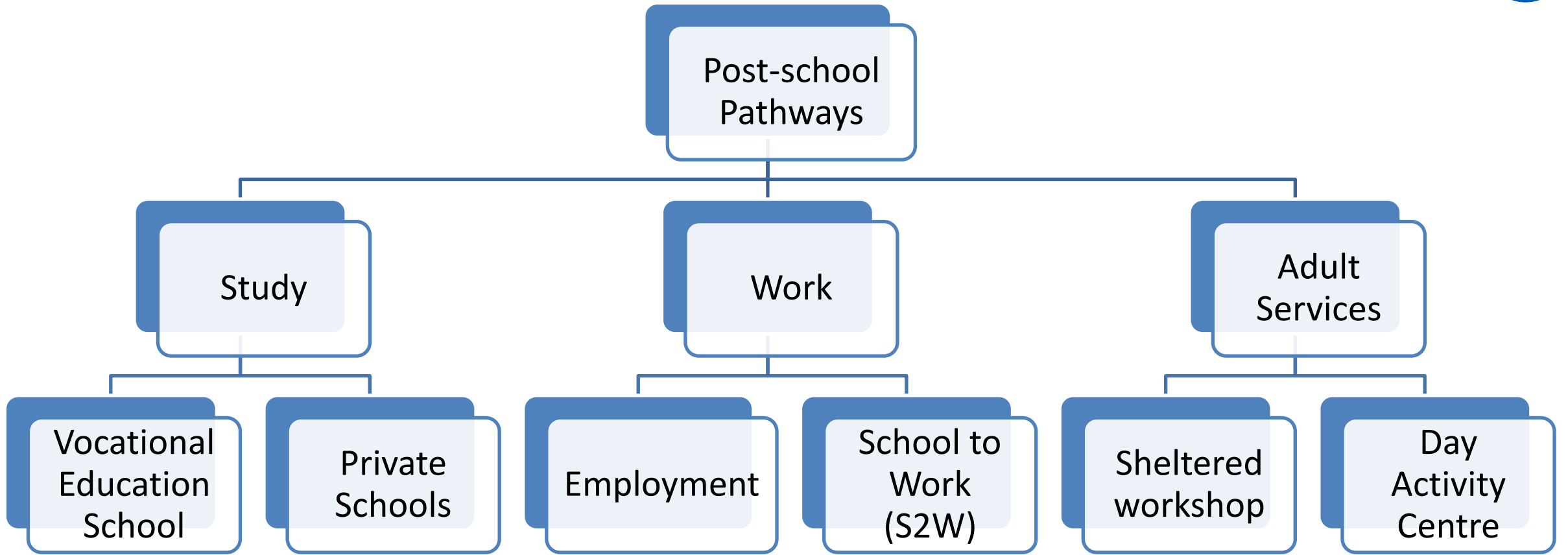
Social Life

Community  
involvement

Recreation

Employment





# Study



## Vocational Schools

- APSN Delta Senior School
- Metta School
- Mountbatten Vocational School

## Private Schools

- Genesis School for Special Education
- Melbourne Specialist International School
- The GUILD International College



# School to Work



A multi party collaboration between MOE, SG Enable and MSF and, partnership with SPED schools.



Help selected students with work potential to transit seamlessly from school to work.



3 pathways

Supported/Customized Employment  
Project.IN

Further Training

# School to Work - Pathways

## Supported/Customized Employment

- Part-time/full-time employment
- Onsite job coach support for 12 months

## Project.IN

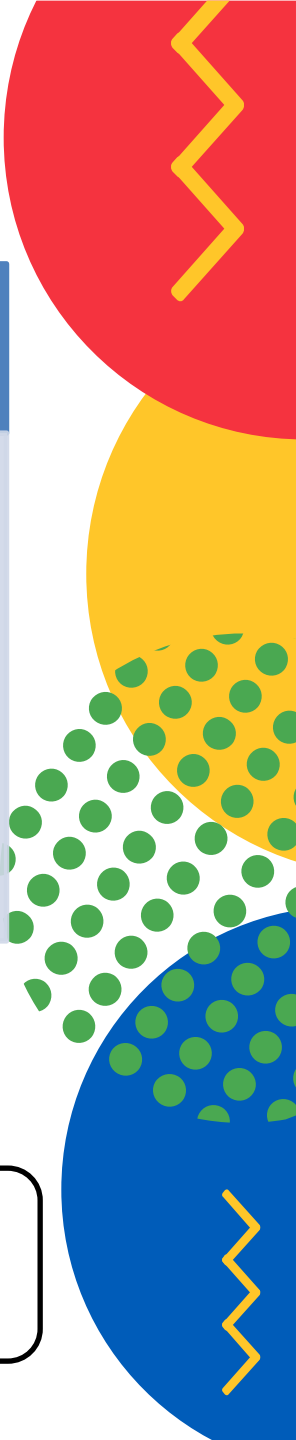
- 3 months classroom-based training
- 9 months group internship
- Onsite job coach support

## Further Training

- 6 months training (classroom and worksite)
- Work attachment for 12 months
- Supervised and small group coaching
- Onsite job coach support



Extended transitional support based on client's needs  
Continual review of work performance and readiness throughout the programme





# School to Work Timeline

End Feb

- Submission of application to SG Enable

March

- Paper shortlisting by SG Enable

April

- Get to know you session by SG Enable for shortlisted students

May

- 2<sup>nd</sup> round of shortlisting
- SG Enable inform school of selected students

July

- Meeting with parents (SG Enable and school)

Sep

- Parents confirm participation

Dec to early 2024

- Caregiver's Briefing
- Commencement of programme



# Sheltered Workshop (SW)



Employment and/or vocational training to adults with disabilities who do not possess the competencies or skills for open employment



Types of work vary across different sheltered workshops  
Different sheltered workshop serves different profiles of clients



Must be able to focus and engage in a task for **at least 30 minutes**, amongst other criteria

# Day Activity Centre (DAC)



Equip persons with disabilities with daily living skills and community living skills to maximise their independence



Types of programmes vary across different day activity centre  
Different day activity centre serves different profiles of clients



Meaningfully occupy persons with disabilities with social and recreational activities

# SW and DAC Criteria



18 years old and above



Singapore citizens or Permanent Residents. For Permanent Residents, at least a family member must be a Singapore Citizen



Diagnosed with congenital disabilities



Should not be suffering from any communicable disease that is still contagious.



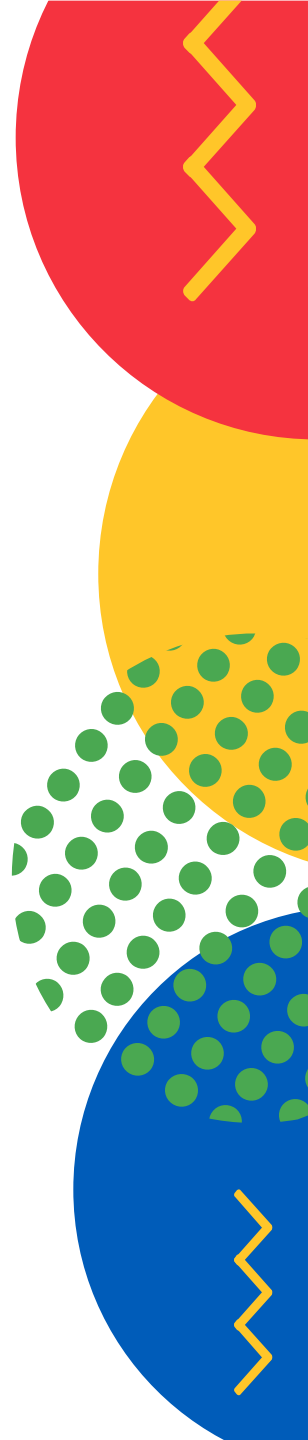
# SW and DAC Application Process

## Semester 1

- Submission of application to SG Enable
- Recommended placement by MSF
- Open House by SW and DAC

## Semester 2

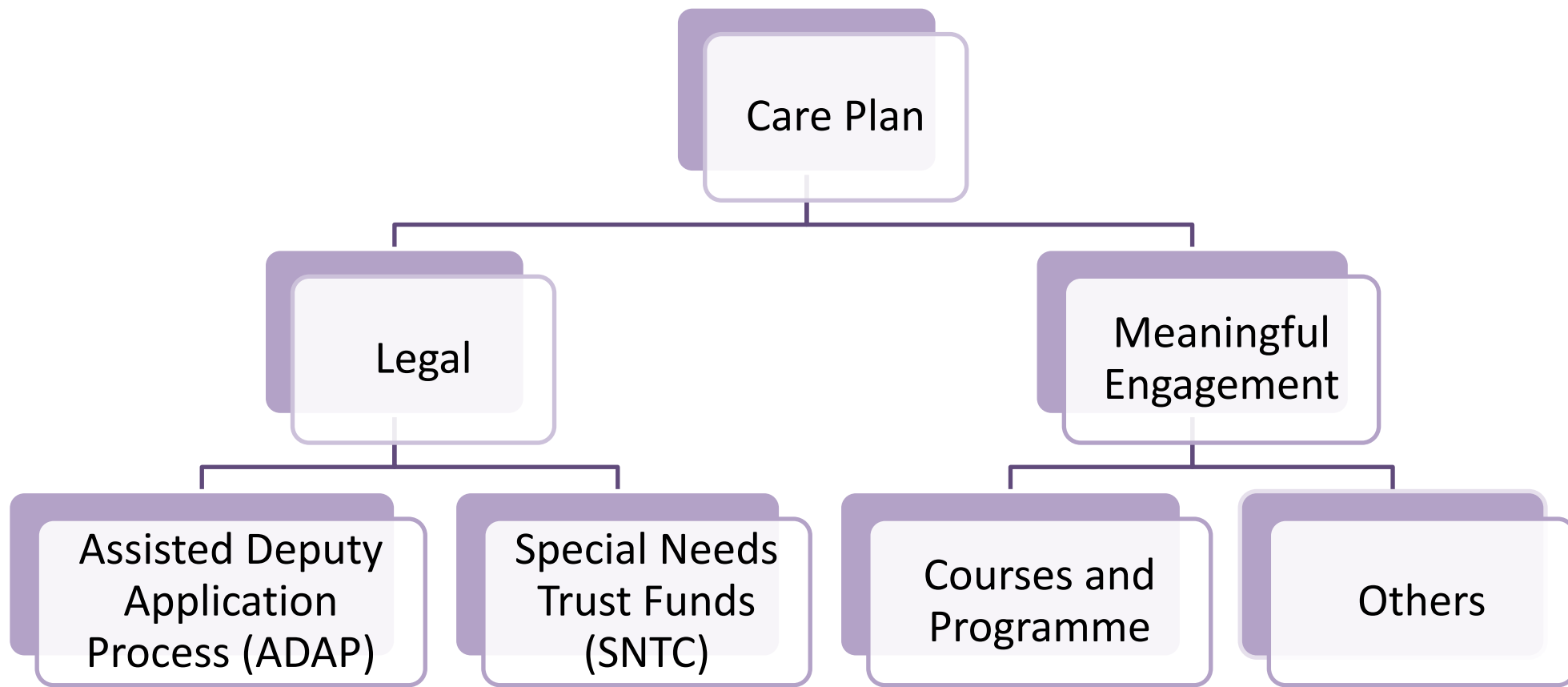
- Parents to decide and submit their 3 choices of SW/DAC
- SW/DAC contact parents for **interview and assessment.**





# Care Plan





# Assisted Deputy Application Process (ADAP)



Apply to court to be deputies for their child, so that they can continue to make legal decisions for their child after he/she turns 21.



## MSF Criteria

1. Child must be in the graduating cohort of a SPED school
2. Agreeable to use the list of power available
3. Must be uncontested



# Special Needs Trust



Provide financial security for loved ones with special needs after the death or incapacitation of the caregiver.



Care Plan to consider the financial and care needs of your child, and these will be set out in the Letter of Intent to be attached to the Trust Deed.



Eligibility Criteria:

Beneficiary must be a person with special needs

Singapore citizen or PR

Resides in Singapore



# Preparation for Post-school Transition

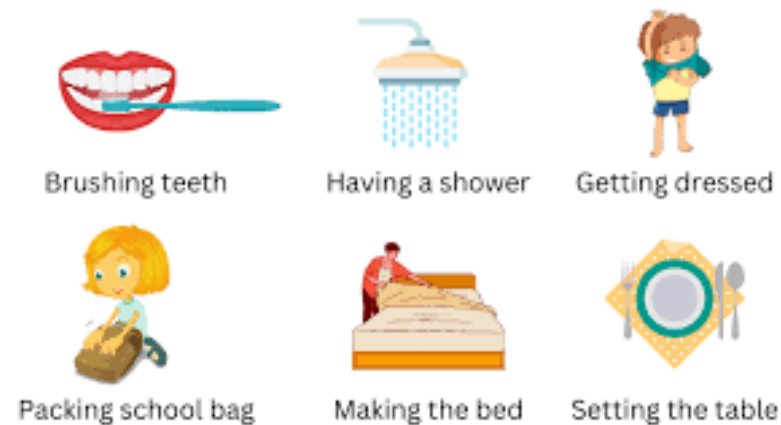
# Preparation for post school transition



Meaningful Engagement at home

Continue to have routine and structure e.g., schedule

Helping in house chores



# Individualized Transition Planning

What are the child's and family's aspiration?

What are his/her strengths?

What are the skills he/she needs to work on?

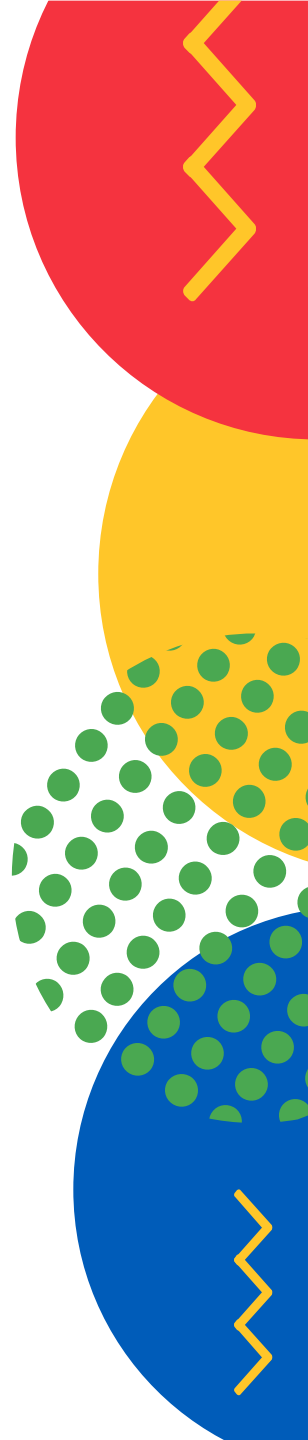
What are the behaviors he/she needs to work on?

What are the barriers?

Are the programme/services that can support my child?

What do the different stakeholders need to do to help my child achieve his/goals?

What are the more urgent things to work on?



# Post-18 Resource Kit

- <https://www.enablingguide.sg/disability-info/life-stages-transitions/post-18-resource-kit>





GRACE  
ORCHARD  
SCHOOL

# Thank You

